

Sr. No.	Product Description	Prod. Code	UNSPSC Code	Std. Pkg.	MRP.
---------	---------------------	------------	-------------	-----------	------

### Blind Corner Cabinet Hinge

HSN Code : 83021090

110	Blind Corner Cabinet Hinge - Soft	7091	31162403SD00097	30	369
111	Blind Corner Cabinet Hinge - Regular	7092	31162403SD00087	30	235



### Pi Corner Cabinet Hinge

HSN Code : 83021090

112	Cabinet Hinge 165 Degree (Pi Corner) - 1 Regular	6841	31162403SD00083	30	581
113	Cabinet Hinge Bi Fold (Pi Corner) - 2 Regular	6840	31162403SD00082	30	309



### Plain Basket - SS\*

HSN Code : 73239490

114	Plain Basket SS	370 X 485 X 100 mm	6120	24112005SD00112	1	1342
115	Plain Basket SS	370 X 485 X 150 mm	6121	24112005SD00065	1	1833
116	Plain Basket SS	370 X 485 X 200 mm	6122	24112005SD00066	1	2162
117	Plain Basket SS	420 X 485 X 100 mm	6123	24112005SD00114	1	1384
118	Plain Basket SS	420 X 485 X 150 mm	6124	24112005SD00109	1	1844
119	Plain Basket SS	420 X 485 X 200 mm	6125	24112005SD00113	1	2329
120	Plain Basket SS	470 X 485 X 100 mm	5902	24112005SD00007	1	1779
121	Plain Basket SS	470 X 485 X 150 mm	5903	24112005SD00008	1	2180
122	Plain Basket SS	470 X 485 X 200 mm	5904	24112005SD00009	1	2582
123	Plain Basket SS	520 X 485 X 100 mm	6126	24112005SD00126	1	1900
124	Plain Basket SS	520 X 485 X 150 mm	6127	24112005SD00127	1	2313
125	Plain Basket SS	520 X 485 X 200 mm	6128	24112005SD00128	1	2703

126	Plain Basket SS	370 X 535 X 100 mm	5850	24112005SD00095	1	2086
127	Plain Basket SS	370 X 535 X 150 mm	5851	24112005SD00093	1	2529
128	Plain Basket SS	370 X 535 X 200 mm	5852	24112005SD00096	1	2764
129	Plain Basket SS	420 X 535 X 100 mm	5853	24112005SD00137	1	2272
130	Plain Basket SS	420 X 535 X 150 mm	5854	24112005SD00138	1	2582
131	Plain Basket SS	420 X 535 X 200 mm	5855	24112005SD00101	1	3057
132	Plain Basket SS	470 X 535 X 100 mm	5856	24112005SD00139	1	2386
133	Plain Basket SS	470 X 535 X 150 mm	5857	24112005SD00140	1	2882
134	Plain Basket SS	470 X 535 X 200 mm	5858	24112005SD00100	1	3306
135	Plain Basket SS	520 X 535 X 100 mm	5859	24112005SD00099	1	2925
136	Plain Basket SS	520 X 535 X 150 mm	5860	24112005SD00141	1	3460
137	Plain Basket SS	520 X 535 X 200 mm	5861	24112005SD00098	1	4037



138	Plain Basket SS	370 X 585 X 100 mm	5708	24112005SD00107	1	2181
139	Plain Basket SS	370 X 585 X 150 mm	5709	24112005SD00146	1	2612
140	Plain Basket SS	370 X 585 X 200 mm	5710	24112005SD00152	1	3156
141	Plain Basket SS	420 X 585 X 100 mm	5711	24112005SD00106	1	2567
142	Plain Basket SS	420 X 585 X 150 mm	5712	24112005SD00153	1	2726

Sr. No.	Product Description	Prod. Code	UNSPSC Code	Std. Pkg.	MRP.
---------	---------------------	------------	-------------	-----------	------

143	Plain Basket SS	420 X 585 X 200 mm	5713	24112005SD00072	1	3391
144	Plain Basket SS	470 X 585 X 100 mm	5714	24112005SD00154	1	2596
145	Plain Basket SS	470 X 585 X 150 mm	5715	24112005SD00155	1	2963
146	Plain Basket SS	470 X 585 X 200 mm	5716	24112005SD00156	1	3562
147	Plain Basket SS	520 X 585 X 100 mm	5717	24112005SD00157	1	3101
148	Plain Basket SS	520 X 585 X 150 mm	5718	24112005SD00158	1	3580
149	Plain Basket SS	520 X 585 X 200 mm	5719	24112005SD00105	1	4298

**Plain Basket - SS 304\***

**HSN Code : 73239490**

150	Plain Basket SS 304	370 X 485 X 100 mm	6148	24112005SD00075	1	2137
151	Plain Basket SS 304	370 X 485 X 150 mm	6149	24112005SD00074	1	2245
152	Plain Basket SS 304	370 X 485 X 200 mm	6150	24112005SD00073	1	2879
153	Plain Basket SS 304	420 X 485 X 100 mm	6151	24112005SD00076	1	2311
154	Plain Basket SS 304	420 X 485 X 150 mm	6152	24112005SD00076	1	2526
155	Plain Basket SS 304	420 X 485 X 200 mm	6153	24112005SD00069	1	3135
156	Plain Basket SS 304	470 X 485 X 100 mm	5910	24112005SD00019	1	2605
157	Plain Basket SS 304	470 X 485 X 150 mm	5911	24112005SD00020	1	2849
158	Plain Basket SS 304	470 X 485 X 200 mm	5912	24112005SD00021	1	3591
159	Plain Basket SS 304	520 X 485 X 100 mm	6154	24112005SD00164	1	2715
160	Plain Basket SS 304	520 X 485 X 150 mm	6155	24112005SD00123	1	2852
161	Plain Basket SS 304	520 X 485 X 200 mm	6156	24112005SD00161	1	3570



**Cup & Saucer Basket - SS\***

**HSN Code : 73239490**

162	Cup & Saucer Basket SS	370 X 485 X 100 mm	6129	24112005SD00064	1	1648
163	Cup & Saucer Basket SS	420 X 485 X 100 mm	6130	24112005SD00108	1	1800
164	Cup & Saucer Basket SS	470 X 485 X 100 mm	5905	24112005SD00027	1	2078
165	Cup & Saucer Basket SS	520 X 485 X 100 mm	6131	224112005SD00118	1	2151

166	Cup & Saucer Basket SS	370 X 535 X 100 mm	5864	24112005SD00142	1	2700
167	Cup & Saucer Basket SS	420 X 535 X 100 mm	5865	24112005SD00097	1	2819
168	Cup & Saucer Basket SS	470 X 535 X 100 mm	5866	24112005SD00143	1	3017
169	Cup & Saucer Basket SS	520 X 535 X 100 mm	5867	24112005SD00144	1	3220



170	Cup & Saucer Basket SS	370 X 585 X 100 mm	5720	24112005SD00159	1	2918
171	Cup & Saucer Basket SS	420 X 585 X 100 mm	5721	24112005SD00071	1	3158
172	Cup & Saucer Basket SS	470 X 585 X 100 mm	5722	24112005SD00160	1	3401
173	Cup & Saucer Basket SS	520 X 585 X 100 mm	5723	24112005SD00104	1	3657

Sr. No.	Product Description	Prod. Code	UNSPSC Code	Std. Pkg.	MRP.
---------	---------------------	------------	-------------	-----------	------

### Cup & Saucer Basket - SS 304\*

HSN Code : 73239490

174	Cup & Saucer Basket SS 304	370 X 485 X 100 mm	6157	24112005SD00163	1	2377
175	Cup & Saucer Basket SS 304	420 X 485 X 100 mm	6158	24112005SD00122	1	2595
176	Cup & Saucer Basket SS 304	470 X 485 X 100 mm	5913	24112005SD00031	1	2918
177	Cup & Saucer Basket SS 304	520 X 485 X 100 mm	6159	24112005SD00068	1	2912



### Perforated Cutlery Basket - SS\*

HSN Code : 73239490

178	Perforated Cutlery Basket SS	370 X 485 X 100 mm	6132	24112005SD00111	1	3731
179	Perforated Cutlery Basket SS	420 X 485 X 100 mm	6133	24112005SD00081	1	4231
180	Perforated Cutlery Basket SS	470 X 485 X 100 mm	5906	24112005SD00058	1	4513



181	Perforated Cutlery Basket SS	520 X 485 X 100 mm	6134	24112005SD00119	1	4727
-----	------------------------------	--------------------	------	-----------------	---	------

182	Perforated Cutlery Basket SS	370 X 535 X 100 mm	5868	24112005SD00087	1	4339
183	Perforated Cutlery Basket SS	420 X 535 X 100 mm	5869	24112005SD00085	1	4875
184	Perforated Cutlery Basket SS	470 X 535 X 100 mm	5870	24112005SD00086	1	5475
185	Perforated Cutlery Basket SS	520 X 535 X 100 mm	5871	24112005SD00088	1	5804

186	Perforated Cutlery Basket SS	370 X 585 X 100 mm	5724	24112005SD00090	1	5591
187	Perforated Cutlery Basket SS	420 X 585 X 100 mm	5725	24112005SD00089	1	6042
188	Perforated Cutlery Basket SS	470 X 585 X 100 mm	5726	24112005SD00092	1	7386
189	Perforated Cutlery Basket SS	520 X 585 X 100 mm	5727	24112005SD00091	1	7467

### Perforated Cutlery Basket - SS 304\*

HSN Code : 73239490

190	Perforated Cutlery Basket SS 304	370 X 485 X 100 mm	6160	24112005SD00084	1	4547
191	Perforated Cutlery Basket SS 304	420 X 485 X 100 mm	6161	24112005SD00079	1	5031
192	Perforated Cutlery Basket SS 304	470 X 485 X 100 mm	5914	24112005SD00062	1	5830
193	Perforated Cutlery Basket SS 304	520 X 485 X 100 mm	6162	24112005SD00080	1	5872



### Thali - Plate Basket - SS\*

HSN Code : 73239490

194	Thali - Plate Basket SS	370 X 485 X 150 mm	6135	24112005SD00067	1	1864
195	Thali - Plate Basket SS	370 X 485 X 200 mm	6136	24112005SD00110	1	2411
196	Thali - Plate Basket SS	420 X 485 X 150 mm	6137	24112005SD00083	1	2090
197	Thali - Plate Basket SS	420 X 485 X 200 mm	6138	24112005SD00082	1	2541
198	Thali - Plate Basket SS	470 X 485 X 150 mm	5907	24112005SD00045	1	2249
199	Thali - Plate Basket SS	470 X 485 X 200 mm	5908	24112005SD00046	1	2718
200	Thali - Plate Basket SS	520 X 485 X 150 mm	6139	24112005SD00129	1	2319
201	Thali - Plate Basket SS	520 X 485 X 200 mm	6140	24112005SD00115	1	2797





Sr. No.	Product Description	Prod. Code	UNSPSC Code	Std. Pkg.	MRP.
---------	---------------------	------------	-------------	-----------	------

202	Thali - Plate Basket SS	370 X 535 X 150 mm	5872	24112005SD00130	1	2814
203	Thali - Plate Basket SS	370 X 535 X 200 mm	5873	24112005SD00131	1	3222
204	Thali - Plate Basket SS	420 X 535 X 150 mm	5874	24112005SD00132	1	3042
205	Thali - Plate Basket SS	420 X 535 X 200 mm	5875	24112005SD00094	1	3208
206	Thali - Plate Basket SS	470 X 535 X 150 mm	5876	24112005SD00133	1	3113
207	Thali - Plate Basket SS	470 X 535 X 200 mm	5877	24112005SD00134	1	3476
208	Thali - Plate Basket SS	520 X 535 X 150 mm	5878	24112005SD00135	1	3656
209	Thali - Plate Basket SS	520 X 535 X 200 mm	5879	24112005SD00136	1	4259



210	Thali - Plate Basket SS	370 X 585 X 150 mm	5728	24112005SD00145	1	3113
211	Thali - Plate Basket SS	370 X 585 X 200 mm	5729	24112005SD00147	1	3639
212	Thali - Plate Basket SS	420 X 585 X 150 mm	5730	24112005SD00148	1	3222
213	Thali - Plate Basket SS	420 X 585 X 200 mm	5731	24112005SD00102	1	3755
214	Thali - Plate Basket SS	470 X 585 X 150 mm	5732	24112005SD00149	1	3408
215	Thali - Plate Basket SS	470 X 585 X 200 mm	5733	24112005SD00150	1	3999
216	Thali - Plate Basket SS	520 X 585 X 150 mm	5734	24112005SD00151	1	3889
217	Thali - Plate Basket SS	520 X 585 X 200 mm	5735	24112005SD00103	1	4412

### Thali - Plate Basket - SS 304\*

HSN Code : 73239490

218	Thali - Plate Basket SS 304	370 X 485 X 150 mm	6163	24112005SD00165	1	2311
219	Thali - Plate Basket SS 304	370 X 485 X 200 mm	6164	24112005SD00166	1	2516
220	Thali - Plate Basket SS 304	420 X 485 X 150 mm	6165	24112005SD00167	1	2238
221	Thali - Plate Basket SS 304	420 X 485 X 200 mm	6166	24112005SD00121	1	2599
222	Thali - Plate Basket SS 304	470 X 485 X 150 mm	5915	24112005SD00052	1	2561
223	Thali - Plate Basket SS 304	470 X 485 X 200 mm	5916	24112005SD00053	1	2823
224	Thali - Plate Basket SS 304	520 X 485 X 150 mm	6167	24112005SD00077	1	2548
225	Thali - Plate Basket SS 304	520 X 485 X 200 mm	6168	24112005SD00162	1	2859



### Two Shelf Pull Out - SS\*

HSN Code : 73239490

226	Two Shelf Pull Out SS	150 X 485 X 430 mm	6141	30162311SD00093	1	3537
227	Two Shelf Pull Out SS	200 X 485 X 430 mm	6142	30162311SD00028	1	3541

### Two Shelf Pull Out - SS 304\*

HSN Code : 73239490

228	Two Shelf Pull Out SS 304	150 X 485 X 430 mm	6169	30162311SD00101	1	3427
229	Two Shelf Pull Out SS 304	200 X 485 X 430 mm	6170	30162311SD00102	1	3847



Sr. No.	Product Description	Prod. Code	UNSPSC Code	Std. Pkg.	MRP.
---------	---------------------	------------	-------------	-----------	------

**Three Shelf Pull Out - SS\***

**HSN Code : 73239490**

230	Three shelf pull out SS	150 X 485 X 530 mm	6143	30162311SD00029	1	4160
231	Three shelf pull out SS	200 X 485 X 530 mm	6144	30162311SD00032	1	4540



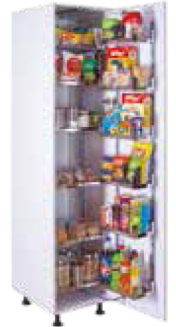
**Three Shelf Pull Out - SS 304\***

**HSN Code : 73239490**

232	Three Shelf Pull Out SS	150 X 485 X 530 mm	6171	30162311SD00036	1	4440
233	Three Shelf Pull Out SS	200 X 485 X 30 mm	6172	30162311SD00103	1	5229

**Pantry Unit**

234	Pantry Unit Acrylic 6/7 ft		4334	30162311SD00191	1	12500
235	Baskets 6+6 Pantry Unit		4336	30162311SD00193	1	22500
236	Pantry Unit Acrylic 4 ft		4335	30162311SD00192	1	10000
237	Baskets 4+4 Pantry Unit		4337	30162311SD00194	1	18000



**Grain Trolley - SS\***

**HSN Code : 73239490**

238	Grain Trolley SS	375 X 485 X 350 mm	6145	24112005SD00125	1	4418
239	Grain Trolley SS	425 X 485 X 350 mm	6146	24112005SD00124	1	5579
240	Grain Trolley SS	470 X 485 X 350 mm	5909	24112005SD00035	1	5779
241	Grain Trolley SS	525 X 485 X 350 mm	6147	24112005SD00116	1	5882



**Grain Trolley - SS 304\***

**HSN Code : 73239490**

242	Grain Trolley SS 304	375 X 485 X 350 mm	6173	24112005SD00120	1	8442
243	Grain Trolley SS 304	425 X 485 X 350 mm	6174	24112005SD00078	1	8826
244	Grain Trolley SS 304	470 X 485 X 350 mm	5917	24112005SD00039	1	8854
245	Grain Trolley SS 304	525 X 485 X 350 mm	6175	24112005SD00117	1	9351

**Midway**

**HSN Code : 73239490**

246	Hanging Spice Rack		4970	30162311SD00153	1	2475
247	Hanging paper & foil holder with cutter		4971	30162311SD00154	1	2000
248	Hanging Multipurpose Double Rack		4974	30162311SD00155	1	2500
249	Hanging Corner Rack		4981	30162311SD00156	1	1800
250	Tube Holder Kit		4982	30162311SD00157	1	750
251	Tube -2Ft		4983	30162311SD00158	1	450
252	Tube -3Ft		4984	30162311SD00159	1	650
253	Tube -4Ft		4985	30162311SD00160	1	850
254	Hanging Multipurpose Single Rack		4803	30162311SD00161	1	1900

